



# ENOVIA Portal

Support for next generation e-business



# ENOVIA **Portal overview**



The next time you're traveling to close a major client deal, you may feel that the airport lounge is a little more crowded than usual. Don't blame it on airline overbooking. It's our new ENOVIA\* Portal, that's all.

With ENOVIA Portal, you're never on your own as long as you have your laptop computer.

Wherever you have a Web connection, you have your extended enterprise with you: designers, product engineers, purchasing, the guys in the Maintenance Department, and even your global network of suppliers and partners.

The ENOVIA Portal is a set of Web-based and Windows\*\*-based solutions from IBM. It adds Internet accessibility to the knowledge-rich digital information created during the product development process. The ENOVIA Portal gives you a single point of access to all product, process and resource (PPR) information throughout your extended enterprise – regardless of where it is stored. A wide variety of scalable Portal power applications allow product content, process and project information to be

viewed, simulated and evaluated. You can even pick up the latest product information while your design team is making a last minute change, and evaluate the consequences.

ENOVIA solutions promote continuous innovation throughout your product development process, helping you achieve and maintain competitive market leadership.

So take a look at how you can keep in touch with everyone in your team, anywhere, anytime. Whether your product information is designed using multiple CAD tools, or spread throughout several sites or even companies, it can all be there with you. Of course, even ENOVIA Portal can't get you a free upgrade to First Class!



# At a glance

In the new digital economy, product content is a key asset for providing the right information to the right people at the right time and in the right form. By succeeding at this, you can enable fact-based decision support, promote innovation and collaboration, and benefit from e-business implementation across your extended enterprise.

But many obstacles to success can stand in your way, including managing the vast amounts of available information, the changing boundaries of the extended enterprise over time, the variety of incompatible information systems, and even just the global nature of today's business. The Internet can transform these potential obstacles into real opportunities. And the entry point to this potential is the ENOVIA Portal. It gives you point-and-click access to information resources, regardless of their location or form. It gathers the separate parts of your extended enterprise and puts them on a single screen. And, it contains the processing and manipulation tools that transform this information into business intelligence.

ENOVIA Portal creates for you a world in which all enterprise product data can be accessed by all authorized users—field engineers for an OEM, component suppliers, subcontractors, project managers, design engineers, purchasing and manufacturing engineers, design partners. They can use the power of the ENOVIA Portal to:

- Find all product information they are interested in by searching the Internet, an intranet, multiple PDM systems, and legacy applications.
- Subscribe to searches in order to receive updates automatically via e-mail.

- Federate search results to include configured product data, Bill Of Material structures, 2D and 3D CAD models (in multiple vendor and standards based formats), and information stored in multiple standard data formats that are supported by most Internet browsers.
- Bookmark results for future reference in a user's individual project folder with our unique RouteBook mechanism. This lets a user return quickly to the information, or to the exact location in the product structure, for future reference.
- Store retrieved information locally on the workstation for consultation later.
- Use the ENOVIA Portal in stand-alone mode, when no network connection is available, to review product data anytime, anywhere.
- Perform advanced design reviews and analysis using ENOVIA Portal Digital Mock-Up for fitting simulations, kinematics and interference analysis.
- Collaborate on product design reviews over the Web by using our built-in conferencing capabilities.
- Manage projects interactively by viewing project management information, stored in Microsoft<sup>®</sup> MPX format, or extracted directly from a PDM system in Gantt chart format.
- Manipulate dynamic activity due dates within a PDM system via 'what if' analysis.



# ENOVIA 3d com **Navigator**



ENOVIA 3d com Navigator provides Web-based services to all organisations that need access to digital enterprise data and processes. This includes companies that are implementing intranet/Internet strategies to extend their product information environments to engineering and non-engineering populations across their extended enterprises. These solutions offer intuitive high-speed and low-cost Web capabilities to explore enterprise product and process information, whether it is managed in ENOVIA products or in other enterprise systems.

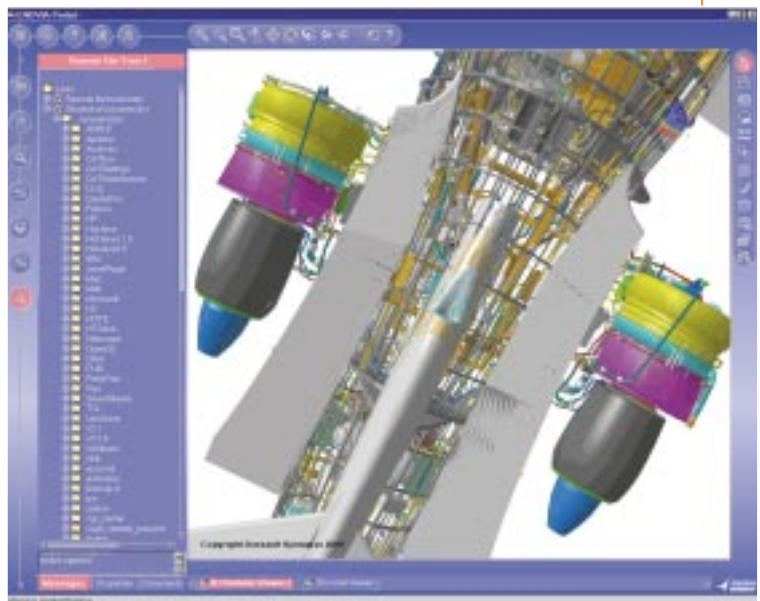
## **ENOVIA 3d com Navigator Standard Features**

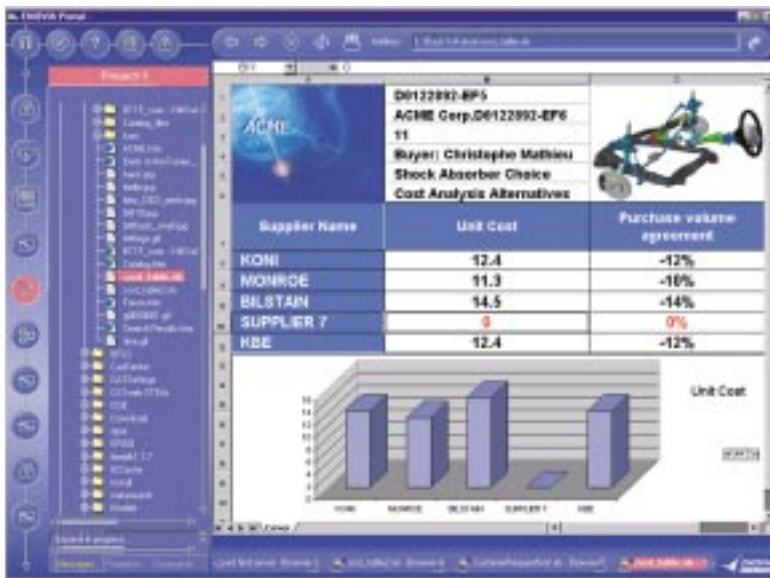
ENOVIA 3d com Navigator is the foundation of the Web-based ENOVIA Portal Solutions. It allows you to view, manipulate, annotate, and broadcast 3D

digital mock-up product, process and resource data. Its distinctive, customizable Webtop environment has user activity records and a unique favorites' registration.

ENOVIA 3d com Navigator works closely with IBM's e-business Application Framework. This combination provides integration capabilities for federating multiple solutions, including legacy systems, in the context of business processes. This is supported by powerful multisource search and browse capabilities.

Intuitive functions support product content throughout the product lifecycle, enabling dynamic remote access, manipulation, viewing and annotations to product data. ENOVIA 3d com Navigator gives you full 3D mock-up review over the Internet. It includes a lightweight





CAD viewer to display product information graphically on Web sites or in e-mail, thus supporting the distribution of 3D data across your extended enterprise. In addition, you can review product structures in a viewer, such as ENOVIA DMU Navigator or CATIA\* Version 5, while looking at project information in a related viewer, such as Microsoft Office\*\*.

native multiCAD data, enabling all users to visualize and work on the current version of the product definition. In addition, we offer a plug-in to integrate Optegra PDM data into your portal session.

To support our engineering customers, we've incorporated a complete set of Product Lifecycle Management plug-ins as standard features of ENOVIA 3d com Navigator. These CATIA, ENOVIAVPM\*, ENOVIAIPM\*, and DELMIA plug-ins allow you to manage project work items, to define, assign and track ENOVIAVPM actions, or to view Microsoft project data.

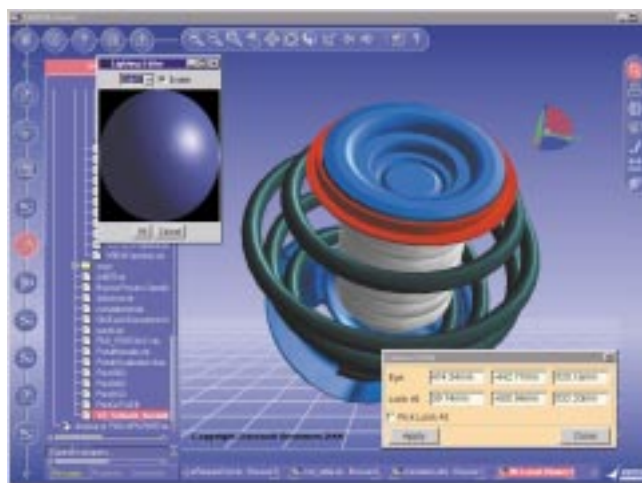
The ENOVIA 3d com Space Analyser module provides you with advanced Web-based 3D analysis and measurement functions.

You can use ENOVIA 3d com Navigator on all client platforms supporting Microsoft Internet Explorer\*\* or Netscape Navigator. To protect your investment in other ENOVIA products, current CATWEB customers benefit from a smooth migration to ENOVIA 3d com Navigator.

ENOVIA 3d com Navigator also includes Web Publishing, which allows dynamic publication of product data for analysis and collaboration. Published pages containing 3D product data can be visualized across the Web using the lightweight CAD viewer.

### ENOVIA 3d com Navigator Optional Products

To give you true integration in a multiCAD/CAM/CAE environment, ENOVIA 3d com Navigator has optional plug-ins for Pro/Engineer, I-DEAS and Unigraphics CAD data. These act on



# ENOVIA DMU Navigator

ENOVIA DMU Navigator provides collaboration, visualization, navigation, review and simulation of all sizes of digital mock-ups for anyone involved in engineering and process decisions. The Windows-compatible interface is easy to learn, even for occasional users. ENOVIA DMU Navigator gives you full-function design review capabilities that can be extended to technological, spatial and motion synthesis. Designed for multiCAD compatibility, the ENOVIA DMU Navigator enables full use of digital mock-up processes throughout your complete product development life cycle.

ENOVIA DMU Navigator key features include:

- interoperability with ENOVIA 3d com Navigator to support configured digital mock-up.
- visualization and analysis of large-scale multiCAD digital mock-ups
- visualization and analysis of 2D documents
- support for multi-user conferencing functions, such as shared screen annotations
- extensive reporting capabilities

ENOVIA DMU Navigator is compatible with and uses the same advanced technologies as those implemented in CATIA Version 5. It offers a range of products that address your specific requirements, from design review to design quality verification and simulation. These products include:

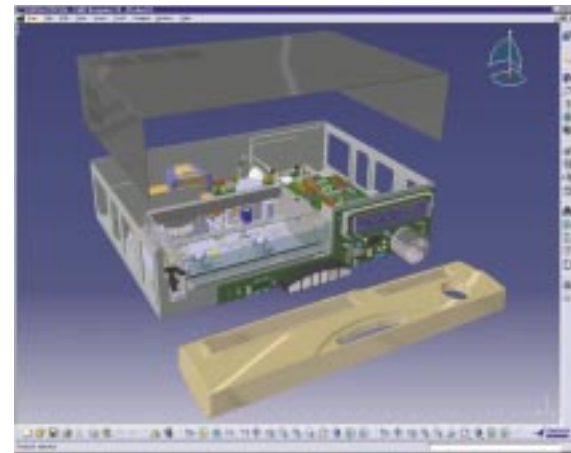
- digital fitting simulation
- digital dimension and tolerance review
- digital kinematics simulation
- digital plant and ship review

ENOVIA DMU Navigator supports multiple CAD systems and multiple industry sectors, making it ideal for use across your extended enterprise. It provides native access to CATIA models, DELMIA\* part, device and work cell data, plus STEP and IGES links. In addition, it has optional links for supporting:

- PTC Pro/Engineer part and assembly data
- I-DEAS Master Series part data
- Unigraphics part descriptions

During a single ENOVIA DMU Navigator session, you can mix data from any of these sources. It also includes an optional product for optimising very large digital mock-up visualization.

ENOVIA DMU Navigator supports UNIX\*\* -based IBM, HP, SUN and SGI platforms, and Windows NT\*\* , Windows 95\*\* , Windows 98\*\* , and Windows 2000 Professional\*\* .



# ENOVIA Portal

## worldwide connection

Often access to product information is limited to a small group of users, such as the engineers responsible for designing and manufacturing the product. But to achieve maximum business benefits, you need to extend product content throughout your virtual enterprise, linking with supply chain management, customer relationship management and other operational systems, as well as with business intelligence and e-commerce.

ENOVIA Portal does just this. It drives product content from engineering and manufacturing into these other critical enterprise processes, helping assure consistent and continuous product innovation. It covers all your visualization and synthesis requirements, including products ranging from simple Web-based 3D viewers, to high-end immersive review and analysis tools for complex digital mock-up.

ENOVIA Portal can help you bring a new level of coherence and interconnection throughout all business processes in your extended enterprise. This allows you to remove inhibitors to innovation, optimize product lifecycle costs, and create new markets and business models.

### **ENOVIA Portal Solutions – a key component of IBM's Product Lifecycle Management e-business**

IBM's Product Lifecycle Management solutions leverage e-business technologies to optimize the product process and to integrate it with all other business processes throughout your extended enterprise. They cover the complete product lifecycle: from design concept through in-service support and product retirement.

IBM's Product Lifecycle Management solutions offer you a complete range of integrated products and services. These include CATIA and ENOVIA to support and manage the collaborative creation, simulation, visualization and knowledge of products, processes and resources. They also include IBM's full line of e-business middleware based on our e-business Application Framework. In addition, Product Lifecycle Management solutions comprise IBM consulting, services and methodologies to provide you with the most effective use and integration of all your software and hardware components.



<http://www.ibm.com/solutions/engineering>

## Your next step

Contact your IBM Marketing Representative, IBM Business Partner, or call one of the numbers on the following list.

## Americas

USA  
Toll-free 1 800 395 3339

Canada  
Toll-free 1 800 395 3339

Argentina  
+54 (0) 11 4319 6896

Brazil  
Toll-free 0800 111426

Mexico  
+525 267 34 26

## Asia/Pacific

Australia  
+61 (0) 2 9842 9555

China  
+86 10 6437 6677 ext. 3439

Hong Kong  
+852 2825 7614

India  
+91 80 526 9050

Indonesia  
+62 (0) 21 252 1222

Japan  
+81 3 3808 8032

Korea  
Toll-free 82 080 023 8080

Malaysia  
+60 3 717 7890

New Zealand  
+61 (0) 2 9842 9555

Philippines  
+63 2 819 2426

Singapore  
+65 1800 320 1975

Taiwan  
+886 (0) 2 725 9632

Thailand  
+66 2 273 4444

## Europe/Middle East/Africa

Austria  
+43 1 21145 2208

Belgium  
+32 2 225 2593

Czech Republic  
+420 (0)2 7213 1742

Denmark  
+45 45 233000

Eastern Europe  
+421 (0)7 69257 236

Egypt  
+202 3492533

Finland  
+358 9 459 6091

France  
+33 (0)1 4905 6566

Germany  
+49 (0) 711 785 5490

Greece  
+30 1 6881475

Hungary  
+36 (0)1 345 0507

Israel  
+972 (0)3 6978111

Italy  
Toll-free 167 017001

Netherlands  
+31 (0) 20 513 3769

Norway  
+47 66 99 9 402

Poland  
+48 22 878 6972

Portugal  
+351 1 7915000

Romania  
+40 1 224 1544

Russia  
+7 095 940 2000

Slovakia  
+421 (0)7 69257 236

Slovenia  
+386 61 1796 696

South Africa  
+27 11 302 8270

Spain  
Toll-free 900 100 400

Sweden  
+46 8 793 5335

Switzerland  
+41 (0) 1 643 7648

Turkey  
+90 212 2800900 ext. 1203

United Kingdom  
+44 870 0102504

## Note

The plus sign (+) indicates that the international access code should be dialed before the country code. Numbers in parentheses, for example (0), should only be dialed when calling from inside a country.



## IBM

Product Lifecycle Management (PLM)  
Marketing Team  
2 Av. Gambetta  
92066 Paris La Defense  
France

The IBM home page can be found on the Internet at **ibm.com**

The IBM Product Lifecycle Management home page can be found on the Internet at **ibm.com/solutions/plm**

Certificate number FM12587

IBM and the e-business logo are registered trademarks of International Business Machines Corporation.

\*\* ENOVIA, CATIA and DELMIA are registered trademarks of Dassault Systemes, S.A.

\*\* Microsoft, Microsoft Office, Microsoft Internet Explorer, Windows, Windows NT, Windows 95, Windows 98 and Windows 2000 Professional are trademarks of Microsoft Corporation.

\*\* UNIX is a registered trademark of The Open Group.

Other company, product and service names may be trademarks, or service marks of others.

Images courtesy of LHIndustries and Usines de Rumancourt S.A.

Images shown may be of pre-production development software. The actual product may look different.

Information in this brochure is for guidance only. For the most current and accurate information about the products, please refer to the announcement letters.

References in this publication to IBM products, programs or services do not imply that IBM intends to make these available in all countries in which IBM operates. Any reference to an IBM product, program or service is not intended to imply that only IBM's product, program or service may be used. Any functionally equivalent product, program or service may be used instead.

This publication is for general guidance only. Photographs may show design models.

Printed in England by Carwin Ltd.

© Copyright IBM Corporation 2000.